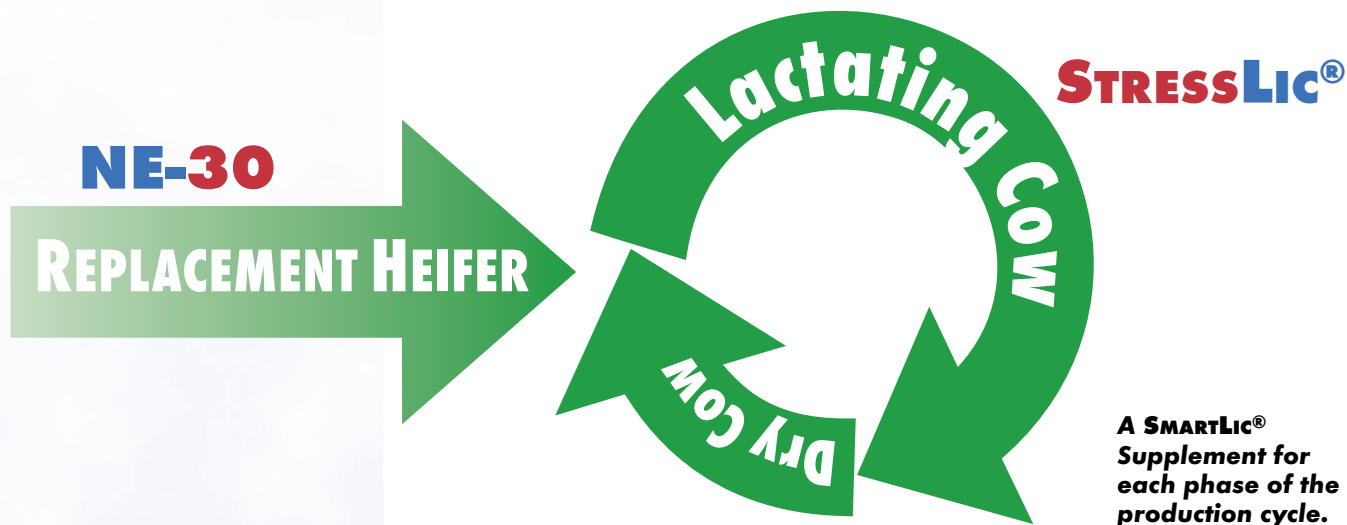


DAIRY PROGRAM

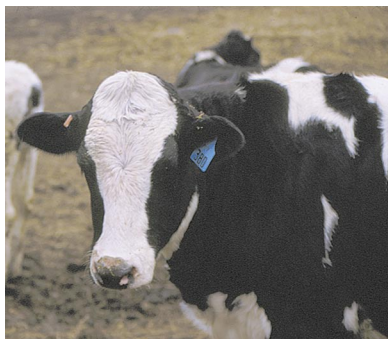


DAIRY DRYLic® LS
OR DAIRY DRYLic® SPL



Help meet your dairy herd's nutritional needs with SmartLic® Supplements. The SmartLic Dairy Program is designed to provide the nutrition your herd needs at various times during the production cycle. SmartLic supplements are Nutritionally Engineered® to provide the energy, protein, vitamins and minerals needed to help maintain proper body condition and increase nutrient levels during periods of high stress. SmartLic Supplements are fortified with nutrients known to enhance reproductive performance and forage utilization.

SmartLic Supplements should be fed at a rate of one block for each 15 to 25 head. Place a minimum of two blocks in each pasture near frequented areas such as watering locations, shade, or loafing areas. For any feeding practice, always provide clean, fresh water to assure proper hydration and dry matter intake.



NE-30

REPLACEMENT HEIFERS: NE-30*

NE-30 is Nutritionally Engineered® to provide the energy, protein, vitamins and minerals needed to maintain an ideal body condition, and develop ideal skeletal growth of replacement heifers. NE-30 should be fed with a free-choice, loose white salt and a free-choice, good quality forage. NE-30 should be fed from a 400 lb. body weight to freshening. Heifer age, forage quality and availability will determine supplement consumption. The expected intake will range from ½ to 1 lb per head per day, making this replacement program very economical to feed.

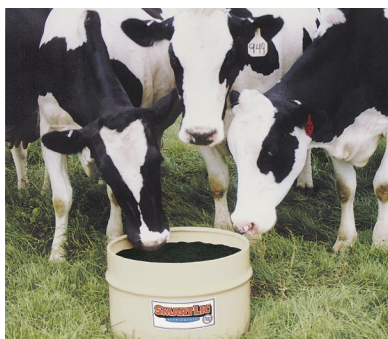
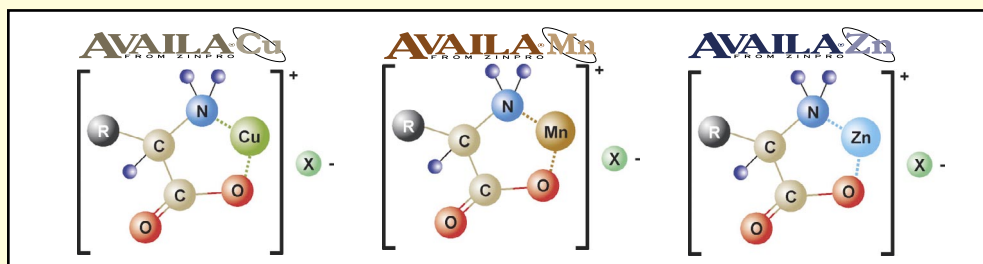


STRESSLIC®

"StressLic is formulated with recommended levels of Zinpro metal complexes."

LACTATING COW: STRESSLIC®*

StressLic provides supplemental energy, high levels of vitamins and trace minerals, as well as Zinpro manganese, copper and zinc metal complexes to boost blood levels during periods of high stress. StressLic works best when fed during early lactation in high producing dairy cows or the high group. StressLic should be fed with a balanced lactation diet that matches body weight, body condition and milk production. The expected intake of StressLic is ½ lb per head per day, making it very economical to feed.



DAIRY DRYLIC® LS

DRY COW: DAIRY DRYLIC® LS OR DRYLIC® SPL*

Dairy DryLic LS is formulated with 200% of the NRC nutrient requirements for trace minerals in order to boost blood levels and minimize metabolic disorders associated with calving. Cows must enter their dry period in ideal body condition. Dairy DryLic LS should be fed with a long stem, low calcium forage such as grass hay to maintain feed intake capacity upon freshening. This will allow a fresh cow to eat and properly peak in milk. When Dairy DryLic LS is fed, no other mineral supplement is recommended. The expected intake of Dairy DryLic LS is ¾ lb per head per day, making it very economical to feed.

* Always provide clean, fresh water to assure proper hydration and dry matter intake.